

MEF2C (YD11416) Rabbit mAb

货号: **AYD15999**

产品信息

反应	Human,Rat
宿主	Rabbit
克隆性	Monoclonal
预测反应	
应用	WB IHC-P
推荐浓度	
理论分子量	51kDa
实测分子量	
形式	Liquid
保存条件	Store at -20°C. Avoid freeze / thaw cycles. Buffer: PBS with 0.75% BSA,50% glycerol,pH7.3.
偶联物	Unconjugated
阳性对照	Mouse brain
细胞定位	Nucleus, Cytoplasm, sarcoplasm
纯化	

抗原信息

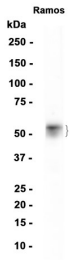
抗原信息	
------	--

靶点信息

研究背景	This locus encodes a member of the MADS box transcription enhancer factor 2 (MEF2) family of proteins, which play a role in myogenesis. The encoded protein, MEF2 polypeptide C, has both trans-activating and DNA binding activities. This protein may play a role in maintaining the differentiated state of muscle cells. Mutations and deletions at this locus have been associated with severe mental retardation, stereotypic movements, epilepsy, and cerebral malformation. Alternatively spliced transcript variants have been described.
基因ID	4208
基因名	MEF2C

Swiss	Q06413
别名	MEF2C (YD11416)

产品验证



实验步骤

访问官网浏览详情: www.ablybio.cn