

DNA Polymerase gamma (YD11437) Rabbit mAb

货号: **AYD15990**

产品信息

反应	Human,Mouse,Rat
宿主	Rabbit
克隆性	Monoclonal
预测反应	
应用	WB
推荐浓度	
理论分子量	140kDa
实测分子量	
形式	Liquid
保存条件	Store at -20°C. Avoid freeze / thaw cycles. Buffer: PBS with 0.75% BSA,50% glycerol,pH7.3.
偶联物	Unconjugated
阳性对照	293F,Jurkat,Mouse placenta,Rat testis
细胞定位	Mitochondrion, Mitochondrion matrix, mitochondrion nucleoid
纯化	

抗原信息

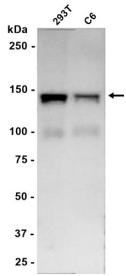
抗原信息	
------	--

靶点信息

研究背景	Mitochondrial DNA polymerase is heterotrimeric, consisting of a homodimer of accessory subunits plus a catalytic subunit. The protein encoded by this gene is the catalytic subunit of mitochondrial DNA polymerase. The encoded protein contains a polyglutamine tract near its N-terminus that may be polymorphic. Deletions in this gene are a cause of progressive external ophthalmoplegia with mitochondrial DNA deletions 1 (PEOA1), sensory ataxic neuropathy dysarthria and ophthalmoparesis (SANDO), Alpers-Huttenlocher syndrome (AHS), and mitochondrial neurogastrointestinal encephalopathy syndrome (MNGIE). Two transcript variants encoding the same protein have been found for this gene.
基因ID	5428
基因名	POLG

Swiss	P54098
别名	DNA Polymerase gamma (YD11437)

产品验证



实验步骤

访问官网浏览详情: www.ablybio.cn