

Glut1 (YD11495) Rabbit mAb

货号: **AYD15983**

产品信息

反应	Human, Mouse, Rat
宿主	Rabbit
克隆性	Monoclonal
预测反应	
应用	WB IHC ICC/IF FC
推荐浓度	
理论分子量	54kDa
实测分子量	
形式	Liquid
保存条件	Store at -20°C. Avoid freeze / thaw cycles. Buffer: PBS with 0.75% BSA,50% glycerol,pH7.3.
偶联物	Unconjugated
阳性对照	HepG2
细胞定位	Cell membrane, Melanosome, Photoreceptor inner segment
纯化	

抗原信息

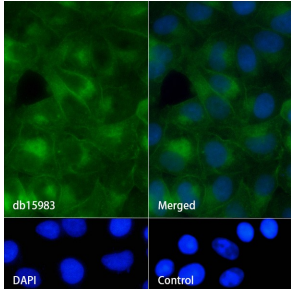
抗原信息	
------	--

靶点信息

研究背景	This gene encodes a major glucose transporter in the mammalian blood-brain barrier. The encoded protein is found primarily in the cell membrane and on the cell surface, where it can also function as a receptor for human T-cell leukemia virus (HTLV) I and II. Mutations in this gene have been found in a family with paroxysmal exertion-induced dyskinesia.
基因ID	6513
基因名	SLC2A1
Swiss	P11166

别名	Glut1 (YD11495)
----	-----------------

产品验证



实验步骤

访问官网浏览详情: www.ablybio.cn