

TOMM40 (YD11500) Rabbit mAb

货号: **AYD15979**

产品信息

反应	Human
宿主	Rabbit
克隆性	Monoclonal
预测反应	
应用	WB IHC-P ICC/IF FC IP
推荐浓度	
理论分子量	38kDa
实测分子量	
形式	Liquid
保存条件	Store at -20°C. Avoid freeze / thaw cycles. Buffer: PBS with 0.75% BSA,50% glycerol,pH7.3.
偶联物	Unconjugated
阳性对照	U-2OS,HepG2,Mouse brain,Mouse testis,Rat brain
细胞定位	Mitochondrion outer membrane
纯化	

抗原信息

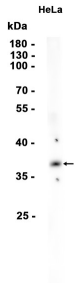
抗原信息	
------	--

靶点信息

研究背景	The protein encoded by this gene is localized in the outer membrane of the mitochondria. It is the channel-forming subunit of the translocase of the mitochondrial outer membrane (TOM) complex that is essential for import of protein precursors into mitochondria. Alternatively spliced transcript variants have been found for this gene.
基因ID	10452
基因名	TOMM40
Swiss	O96008

别名	TOMM40 (YD11500)
----	------------------

产品验证



实验步骤

访问官网浏览详情: www.ablybio.cn