

CAP1 (YD11569) Rabbit mAb

货号: **AYD15964**

产品信息

反应	Human
宿主	Rabbit
克隆性	Monoclonal
预测反应	
应用	WB IHC-P ICC/IF
推荐浓度	
理论分子量	52kDa
实测分子量	
形式	Liquid
保存条件	Store at -20°C. Avoid freeze / thaw cycles. Buffer: PBS with 0.75% BSA,50% glycerol,pH7.3.
偶联物	Unconjugated
阳性对照	HeLa,293T,A-431,HepG2,Rat thymus,Mouse thymus
细胞定位	Cell membrane
纯化	

抗原信息

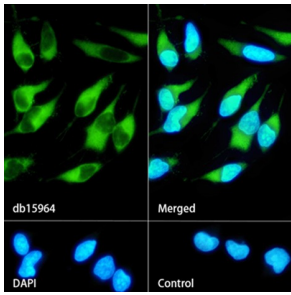
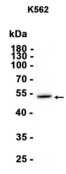
抗原信息	
------	--

靶点信息

研究背景	The protein encoded by this gene is related to the <i>S. cerevisiae</i> CAP protein, which is involved in the cyclic AMP pathway. The human protein is able to interact with other molecules of the same protein, as well as with CAP2 and actin. Alternatively spliced transcript variants encoding different isoforms have been identified.
基因ID	10487
基因名	CAP1
Swiss	Q01518

别名	CAP1 (YD11569)
----	----------------

产品验证



实验步骤

访问官网浏览详情: www.ablybio.cn