

alpha 1 Spectrin (YD11801) Rabbit mAb

货号: **AYD15906**

产品信息

反应	Human,Mouse,Rat
宿主	Rabbit
克隆性	Monoclonal
预测反应	
应用	WB FC
推荐浓度	
理论分子量	280kDa
实测分子量	
形式	Liquid
保存条件	Store at -20°C. Avoid freeze / thaw cycles. Buffer: PBS with 0.75% BSA,50% glycerol,pH7.3.
偶联物	Unconjugated
阳性对照	239T,LO2,A-549,Mouse kidney,Mouse liver,Mouse lung,Rat heart
细胞定位	Cytoplasm, cytoskeleton, cell cortex
纯化	

抗原信息

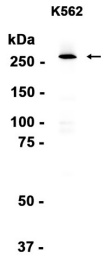
抗原信息	
------	--

靶点信息

研究背景	<p>Spectrin is an actin crosslinking and molecular scaffold protein that links the plasma membrane to the actin cytoskeleton, and functions in the determination of cell shape, arrangement of transmembrane proteins, and organization of organelles. It is a tetramer made up of alpha-beta dimers linked in a head-to-head arrangement. This gene is one member of a family of alpha-spectrin genes. The encoded protein is primarily composed of 22 spectrin repeats which are involved in dimer formation. It forms weaker tetramer interactions than non-erythrocytic alpha spectrin, which may increase the plasma membrane elasticity and deformability of red blood cells. Mutations in this gene result in a variety of hereditary red blood cell disorders, including elliptocytosis type 2, pyropoikilocytosis, and spherocytic hemolytic anemia.</p>
基因ID	6708

基因名	SPTA1
Swiss	P02549
别名	alpha 1 Spectrin (YD11801)

产品验证



实验步骤

访问官网浏览详情: www.ablybio.cn