

— ABLYBIO, Help Your Research



Cytokeratin 20 (YD12132) Rabbit mAb

货号: **AYD15816**

产品信息

反应	Human,Rat
宿主	Rabbit
克隆性	Monoclonal
预测反应	
应用	WB
推荐浓度	
理论分子量	48kDa
实测分子量	
形式	Liquid
保存条件	Store at -20°C. Avoid freeze / thaw cycles. Buffer: PBS with 0.75% BSA,50% glycerol,pH7.3.
偶联物	Unconjugated
阳性对照	HeLa,Mouse intestine
细胞定位	Cytoplasm
纯化	亲和纯化

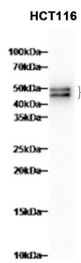
抗原信息

抗原信息	
------	--

靶点信息

研究背景	The protein encoded by this gene is a member of the keratin family. The keratins are intermediate filament proteins responsible for the structural integrity of epithelial cells and are subdivided into cytokeratins and hair keratins. The type I cytokeratins consist of acidic proteins which are arranged in pairs of heterotypic keratin chains. This cytokeratin is a major cellular protein of mature enterocytes and goblet cells and is specifically expressed in the gastric and intestinal mucosa. The type I cytokeratin genes are clustered in a region of chromosome 17q12-q21.
基因ID	54474
基因名	KRT20
Swiss	P35900 (https://www.uniprot.org/uniprotkb/P35900/entry)
别名	Cytokeratin 20 (YD12132),Cytokeratin 20 (YD12132) Rabbit mAb,KRT20,Cytokeratin-20,Keratin-20,Protein IT,Cytokeratin 20,Cytokeratin 20 Rabbit mAb,KRT20,Cytokeratin-20,Keratin-20,Protein IT,CK20,CK-20, KRT 21; 9030623C06Rik; K1C20_HUMAN; KRT20; Cytokeratin-20 (CK-20); Keratin-20 (K20); Protein IT; K1C20_MOUSE; K1C20_RAT; Cytokeratin-21 (CK-21); keratin 20; keratin 20,

产品验证



实验步骤

访问官网浏览详情: www.ablybio.cn (<https://www.ablybio.cn/www.ablybio.cn>)