

Cathepsin D (YD12869) Rabbit mAb

货号: **AYD15702**

产品信息

反应	Human, Mouse
宿主	Rabbit
克隆性	Monoclonal
预测反应	
应用	WB IHC ICC/IF FC IP
推荐浓度	
理论分子量	45kDa
实测分子量	
形式	Liquid
保存条件	Store at -20°C. Avoid freeze / thaw cycles. Buffer: PBS with 0.75% BSA,50% glycerol,pH7.3.
偶联物	Unconjugated
阳性对照	SK-BR-3,Rat lung
细胞定位	Lysosome, Melanosome, Secreted, extracellular space
纯化	

抗原信息

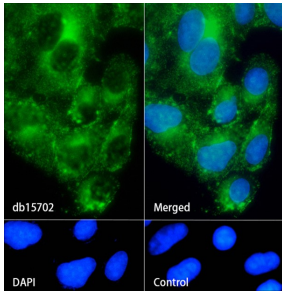
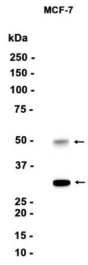
抗原信息	
------	--

靶点信息

研究背景	This gene encodes a member of the A1 family of peptidases. The encoded preproprotein is proteolytically processed to generate multiple protein products. These products include the cathepsin D light and heavy chains, which heterodimerize to form the mature enzyme. This enzyme exhibits pepsin-like activity and plays a role in protein turnover and in the proteolytic activation of hormones and growth factors. Mutations in this gene play a causal role in neuronal ceroid lipofuscinosis-10 and may be involved in the pathogenesis of several other diseases, including breast cancer and possibly Alzheimer's disease.
基因ID	1509
基因名	CTSD

Swiss	P07339
别名	Cathepsin D (YD12869)

产品验证



实验步骤

访问官网浏览详情: www.ablybio.cn