

L1CAM (YD12988) Rabbit mAb

货号: **AYD15678**

产品信息

反应	Human,Mouse,Rat
宿主	Rabbit
克隆性	Monoclonal
预测反应	
应用	WB IHC-P IP
推荐浓度	
理论分子量	140kDa
实测分子量	
形式	Liquid
保存条件	Store at -20°C. Avoid freeze / thaw cycles. Buffer: PBS with 0.75% BSA,50% glycerol,pH7.3.
偶联物	Unconjugated
阳性对照	U-251MG,Neuro-2a,Mouse brain,Rat brain
细胞定位	Cell membrane, Cell projection, growth cone, axon, dendrite
纯化	

抗原信息

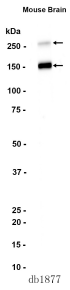
抗原信息	
------	--

靶点信息

研究背景	The protein encoded by this gene is an axonal glycoprotein belonging to the immunoglobulin supergene family. The ectodomain, consisting of several immunoglobulin-like domains and fibronectin-like repeats (type III), is linked via a single transmembrane sequence to a conserved cytoplasmic domain. This cell adhesion molecule plays an important role in nervous system development, including neuronal migration and differentiation. Mutations in the gene cause X-linked neurological syndromes known as CRASH (corpus callosum hypoplasia, retardation, aphasia, spastic paraplegia and hydrocephalus). Alternative splicing of this gene results in multiple transcript variants, some of which include an alternate exon that is considered to be specific to neurons.
基因ID	3897

基因名	L1CAM
Swiss	P32004
别名	L1CAM (YD12988)

产品验证



实验步骤

访问官网浏览详情: www.ablybio.cn