

RHEB (YD13216) Rabbit mAb

货号: **AYD15626**

产品信息

反应	Human
宿主	Rabbit
克隆性	Monoclonal
预测反应	
应用	WB IHC-P ICC/IF FC
推荐浓度	
理论分子量	20kDa
实测分子量	
形式	Liquid
保存条件	Store at -20°C. Avoid freeze / thaw cycles. Buffer: PBS with 0.75% BSA,50% glycerol,pH7.3.
偶联物	Unconjugated
阳性对照	DU145,U-87MG,Mouse brain
细胞定位	Endomembrane system, Lysosome membrane, Golgi apparatus membrane, Endoplasmic reticulum membrane, Cytoplasm, cytosol
纯化	

抗原信息

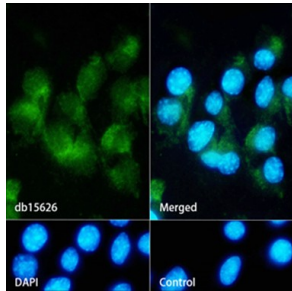
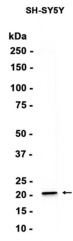
抗原信息	
------	--

靶点信息

研究背景	This gene is a member of the small GTPase superfamily and encodes a lipid-anchored, cell membrane protein with five repeats of the RAS-related GTP-binding region. This protein is vital in regulation of growth and cell cycle progression due to its role in the insulin/TOR/S6K signaling pathway. The protein has GTPase activity and shuttles between a GDP-bound form and a GTP-bound form, and farnesylation of the protein is required for this activity. Three pseudogenes have been mapped, two on chromosome 10 and one on chromosome 22.
基因ID	6009
基因名	RHEB

Swiss	Q15382
别名	RHEB (YD13216)

产品验证



实验步骤

访问官网浏览详情: www.ablybio.cn