

# GRB2 (YD13455) Rabbit mAb

货号: **AYD15571**

## 产品信息

反应	Human, Mouse, Rat
宿主	Rabbit
克隆性	Monoclonal
预测反应	
应用	WB IHC ICC/IF IP
推荐浓度	
理论分子量	25kDa
实测分子量	
形式	Liquid
保存条件	Store at -20°C. Avoid freeze / thaw cycles. Buffer: PBS with 0.75% BSA,50% glycerol,pH7.3.
偶联物	Unconjugated
阳性对照	SW620,Raji,BT-474,HepG2,Mouse heart
细胞定位	Nucleus, Cytoplasm, Endosome, Golgi apparatus
纯化	

## 抗原信息

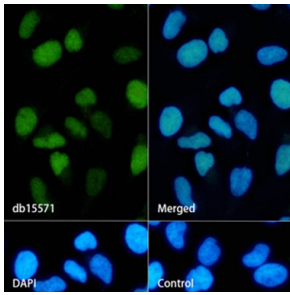
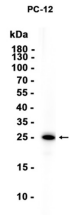
抗原信息	
------	--

## 靶点信息

研究背景	The protein encoded by this gene binds the epidermal growth factor receptor and contains one SH2 domain and two SH3 domains. Its two SH3 domains direct complex formation with proline-rich regions of other proteins, and its SH2 domain binds tyrosine phosphorylated sequences. This gene is similar to the Sem5 gene of C.elegans, which is involved in the signal transduction pathway. Two alternatively spliced transcript variants encoding different isoforms have been found for this gene.
基因ID	2885
基因名	GRB2
Swiss	P62993

别名	GRB2 (YD13455)
----	----------------

## 产品验证



## 实验步骤

访问官网浏览详情: [www.ablybio.cn](http://www.ablybio.cn)