

GM130 (YD13579) Rabbit mAb

货号: **AYD15538**

产品信息

反应	Human
宿主	Rabbit
克隆性	Monoclonal
预测反应	
应用	WB IHC-P ICC/IF FC IP
推荐浓度	
理论分子量	113kDa
实测分子量	
形式	Liquid
保存条件	Store at -20°C. Avoid freeze / thaw cycles. Buffer: PBS with 0.75% BSA,50% glycerol,pH7.3.
偶联物	Unconjugated
阳性对照	Mouse heart
细胞定位	Golgi apparatus, cis-Golgi network membrane, Endoplasmic reticulum-Golgi intermediate compartment membrane, Cytoplasm, cytoskeleton, spindle pole
纯化	

抗原信息

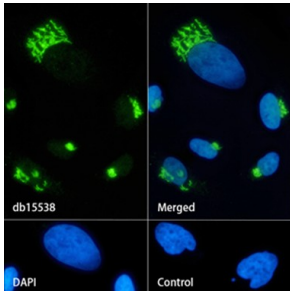
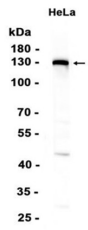
抗原信息	
------	--

靶点信息

研究背景	The Golgi apparatus, which participates in glycosylation and transport of proteins and lipids in the secretory pathway, consists of a series of stacked cisternae (flattened membrane sacs). Interactions between the Golgi and microtubules are thought to be important for the reorganization of the Golgi after it fragments during mitosis. This gene encodes one of the golgins, a family of proteins localized to the Golgi. This encoded protein has been postulated to play roles in the stacking of Golgi cisternae and in vesicular transport. Several alternatively spliced transcript variants of this gene have been described, but the full-length nature of these variants has not been determined.
基因ID	2801

基因名	GOLGA2
Swiss	Q08379
别名	GM130 (YD13579)

产品验证



实验步骤

访问官网浏览详情: www.ablybio.cn