

# Lin28 (YD13655) Rabbit mAb

货号: **AYD15519**

## 产品信息

反应	Human
宿主	Rabbit
克隆性	Monoclonal
预测反应	
应用	WB ICC/IF
推荐浓度	
理论分子量	23kDa
实测分子量	
形式	Liquid
保存条件	Store at -20°C. Avoid freeze / thaw cycles. Buffer: PBS with 0.75% BSA,50% glycerol,pH7.3.
偶联物	Unconjugated
阳性对照	T47D
细胞定位	Cytoplasm, Rough endoplasmic reticulum, P-body, Stress granule, Nucleus, nucleolus
纯化	

## 抗原信息

抗原信息	
------	--

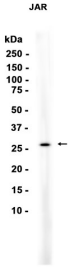
## 靶点信息

研究背景	This gene encodes a LIN-28 family RNA-binding protein that acts as a posttranscriptional regulator of genes involved in developmental timing and self-renewal in embryonic stem cells. The encoded protein functions through direct interaction with target mRNAs and by disrupting the maturation of certain miRNAs involved in embryonic development. This protein prevents the terminal processing of the LET7 family of microRNAs which are major regulators of cellular growth and differentiation. Aberrant expression of this gene is associated with cancer progression in multiple tissues.
基因ID	79727
基因名	LIN28A

Swiss	Q9H9Z2
别名	Lin28 (YD13655)

## 产品验证

---



## 实验步骤

访问官网浏览详情: [www.ablybio.cn](http://www.ablybio.cn)