

# KSR1 (YD14014) Rabbit mAb

货号: **AYD15458**

## 产品信息

反应	Human,Mouse,Rat
宿主	Rabbit
克隆性	Monoclonal
预测反应	
应用	WB IHC-P
推荐浓度	
理论分子量	102kDa
实测分子量	
形式	Liquid
保存条件	Store at -20°C. Avoid freeze / thaw cycles. Buffer: PBS with 0.75% BSA,50% glycerol,pH7.3.
偶联物	Unconjugated
阳性对照	U-251MG,HeLa,Jurkat,mouse brain,mouse spleen,mouse testis,mouse kidney,mouse lung,rat brain
细胞定位	Cytoplasm, Membrane, Cell membrane, Cell projection, ruffle membrane, Endoplasmic reticulum membrane
纯化	

## 抗原信息

抗原信息	
------	--

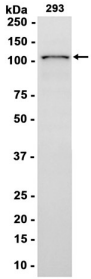
## 靶点信息

研究背景	Part of a multiprotein signaling complex which promotes phosphorylation of Raf family members and activation of downstream MAP kinases (By similarity. Independently of its kinase activity, acts as MAP2K1/MEK1 and MAP2K2/MEK2-dependent allosteric activator of BRAF; upon binding to MAP2K1/MEK1 or MAP2K2/MEK2, dimerizes with BRAF and promotes BRAF-mediated phosphorylation of MAP2K1/MEK1 and/or MAP2K2/MEK2. Promotes activation of MAPK1 and/or MAPK3, both in response to EGF and to cAMP (By similarity. Its kinase activity is unsure (By similarity. Some protein kinase activity has been detected in vitro, however the physiological relevance of this activity is unknown (By similarity.
基因ID	8844

基因名	KSR1
Swiss	Q8IVT5
别名	KSR1 (YD14014)

## 产品验证

---



## 实验步骤

访问官网浏览详情: [www.ablybio.cn](http://www.ablybio.cn)