

Ketohexokinase (YD14111) Rabbit mAb

货号: **AYD15426**

产品信息

反应	Human,Mouse,Rat
宿主	Rabbit
克隆性	Monoclonal
预测反应	
应用	WB IHC-P ICC/IF IP
推荐浓度	
理论分子量	33kDa
实测分子量	
形式	Liquid
保存条件	Store at -20°C. Avoid freeze / thaw cycles. Buffer: PBS with 0.75% BSA,50% glycerol,pH7.3.
偶联物	Unconjugated
阳性对照	Mouse kidney,Mouse liver,Rat kidney
细胞定位	
纯化	

抗原信息

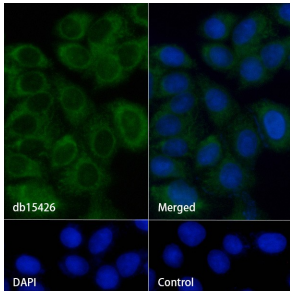
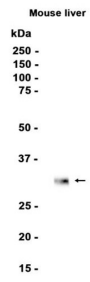
抗原信息	
------	--

靶点信息

研究背景	This gene encodes ketohexokinase that catalyzes conversion of fructose to fructose-1-phosphate. The product of this gene is the first enzyme with a specialized pathway that catabolizes dietary fructose. Alternatively spliced transcript variants encoding different isoforms have been identified.
基因ID	3795
基因名	KHK
Swiss	P50053
别名	Ketohexokinase (YD14111)

产品验证

Mouse liver
kDa
250 -
150 -
100 -
75 -
50 -
37 -
25 -
20 -
15 -



实验步骤

访问官网浏览详情: www.ablybio.cn