

MSI2 (YD14116) Rabbit mAb

货号: **AYD15422**

产品信息

反应	Human,Mouse,Rat
宿主	Rabbit
克隆性	Monoclonal
预测反应	
应用	WB IHC-P ICC/IF FC IP
推荐浓度	
理论分子量	35kDa
实测分子量	
形式	Liquid
保存条件	Store at -20°C. Avoid freeze / thaw cycles. Buffer: PBS with 0.75% BSA,50% glycerol,pH7.3.
偶联物	Unconjugated
阳性对照	Mouse brain
细胞定位	Cytoplasm
纯化	

抗原信息

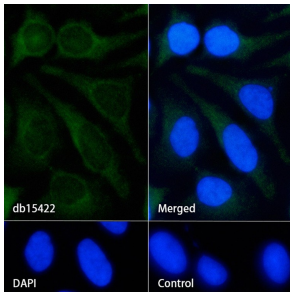
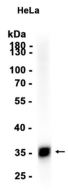
抗原信息	
------	--

靶点信息

研究背景	This gene encodes an RNA-binding protein that is a member of the Musashi protein family. The encoded p rotein is transcriptional regulator that targets genes involved in development and cell cycle regulation. M utations in this gene are associated with poor prognosis in certain types of cancers. This gene has also be en shown to be rearranged in certain cancer cells.
基因ID	124540
基因名	MSI2
Swiss	Q96DH6

别名	MSI2 (YD14116)
----	----------------

产品验证



实验步骤

访问官网浏览详情: www.ablybio.cn