

Smoothelin (YD14198) Rabbit mAb

货号: **AYD15391**

产品信息

反应	Human,Mouse,Rat
宿主	Rabbit
克隆性	Monoclonal
预测反应	
应用	WB IHC-P
推荐浓度	
理论分子量	99kDa
实测分子量	
形式	Liquid
保存条件	Store at -20°C. Avoid freeze / thaw cycles. Buffer: PBS with 0.75% BSA,50% glycerol,pH7.3.
偶联物	Unconjugated
阳性对照	MCF7,5637,Mouse kidney,Rat lung
细胞定位	Cytoplasm, cytoskeleton
纯化	

抗原信息

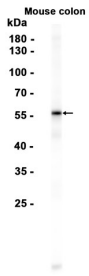
抗原信息	
------	--

靶点信息

研究背景	This gene encodes a structural protein that is found exclusively in contractile smooth muscle cells. It associates with stress fibers and constitutes part of the cytoskeleton. This gene is localized to chromosome 22 q12.3, distal to the TUPLE1 locus and outside the DiGeorge syndrome deletion. Alternative splicing of this gene results in multiple transcript variants encoding distinct isoforms.
基因ID	6525
基因名	SMTN
Swiss	P53814

别名	Smoothelin (YD14198)
----	----------------------

产品验证



实验步骤

访问官网浏览详情: www.ablybio.cn