

CLCA1 (YD14273) Rabbit mAb

货号: **AYD15358**

产品信息

反应	Human, Mouse, Rat
宿主	Rabbit
克隆性	Monoclonal
预测反应	
应用	WB IHC-P ICC/IF FC IP
推荐浓度	
理论分子量	100kDa
实测分子量	
形式	Liquid
保存条件	Store at -20°C. Avoid freeze / thaw cycles. Buffer: PBS with 0.75% BSA,50% glycerol,pH7.3.
偶联物	Unconjugated
阳性对照	mouse uterus, rat small intestine
细胞定位	Secreted, extracellular space, Cell membrane
纯化	

抗原信息

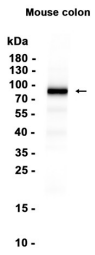
抗原信息	
------	--

靶点信息

研究背景	This gene encodes a member of the calcium sensitive chloride conductance protein family. To date, all members of this gene family map to the same region on chromosome 1p31-p22 and share a high degree of homology in size, sequence, and predicted structure, but differ significantly in their tissue distributions. The encoded protein is expressed as a precursor protein that is processed into two cell-surface-associated subunits, although the site at which the precursor is cleaved has not been precisely determined. The encoded protein may be involved in mediating calcium-activated chloride conductance in the intestine.
基因ID	1179
基因名	CLCA1

Swiss	A8K7I4
别名	CLCA1 (YD14273)

产品验证



实验步骤

访问官网浏览详情: www.ablybio.cn