

# IGF1 (YD14280) Rabbit mAb

货号: **AYD15355**

## 产品信息

反应	Human, Mouse, Rat
宿主	Rabbit
克隆性	Monoclonal
预测反应	
应用	WB
推荐浓度	
理论分子量	22kDa
实测分子量	
形式	Liquid
保存条件	Store at -20°C. Avoid freeze / thaw cycles. Buffer: PBS with 0.75% BSA,50% glycerol,pH7.3.
偶联物	Unconjugated
阳性对照	U-87MG,SKOV3,HeLa,Mouse liver,Mouse testis,Rat testis
细胞定位	Secreted
纯化	

## 抗原信息

抗原信息	
------	--

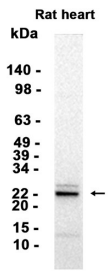
## 靶点信息

研究背景	The protein encoded by this gene is similar to insulin in function and structure and is a member of a family of proteins involved in mediating growth and development. The encoded protein is processed from a precursor, bound by a specific receptor, and secreted. Defects in this gene are a cause of insulin-like growth factor I deficiency. Alternative splicing results in multiple transcript variants encoding different isoforms that may undergo similar processing to generate mature protein.
基因ID	3479
基因名	IGF1
Swiss	P05019

别名	IGF1 (YD14280)
----	----------------

## 产品验证

---



## 实验步骤

访问官网浏览详情: [www.ablybio.cn](http://www.ablybio.cn)