

Dopamine beta Hydroxylase (YD14293) Rabbit mAb

货号: AYD15351

产品信息

反应	Human,Mouse,Rat
宿主	Rabbit
克隆性	Monoclonal
预测反应	
应用	WB IHC-P IP
推荐浓度	
理论分子量	69kDa
实测分子量	
形式	Liquid
保存条件	Store at -20°C. Avoid freeze / thaw cycles. Buffer: PBS with 0.75% BSA,50% glycerol,pH7.3.
偶联物	Unconjugated
阳性对照	Mouse brain
细胞定位	Cytoplasmic vesicle, secretory vesicle lumen, secretory vesicle, chromaffin granule lumen, Secreted, secretory vesicle membrane, chromaffin granule membrane
纯化	

抗原信息

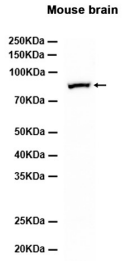
抗原信息	
------	--

靶点信息

研究背景	The protein encoded by this gene is an oxidoreductase belonging to the copper type II, ascorbate-dependent monooxygenase family. It is present in the synaptic vesicles of postganglionic sympathetic neurons and converts dopamine to norepinephrine. It exists in both soluble and membrane-bound forms, depending on the absence or presence, respectively, of a signal peptide.
基因ID	1621
基因名	DBH

Swiss	P09172
别名	Dopamine beta Hydroxylase (YD14293)

产品验证



实验步骤

访问官网浏览详情: www.ablybio.cn