

Hemoglobin subunit beta (YD14429) Rabbit mAb

货号: **AYD15304**

产品信息

反应	Human,Mouse,Rat
宿主	Rabbit
克隆性	Monoclonal
预测反应	
应用	WB IP
推荐浓度	
理论分子量	16kDa
实测分子量	
形式	Liquid
保存条件	Store at -20°C. Avoid freeze / thaw cycles. Buffer: PBS with 0.75% BSA,50% glycerol,pH7.3.
偶联物	Unconjugated
阳性对照	Raji
细胞定位	
纯化	

抗原信息

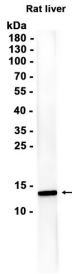
抗原信息	
------	--

靶点信息

研究背景	The alpha (HBA) and beta (HBB) loci determine the structure of the 2 types of polypeptide chains in adult hemoglobin, Hb A. The normal adult hemoglobin tetramer consists of two alpha chains and two beta chains. Mutant beta globin causes sickle cell anemia. Absence of beta chain causes beta-zero-thalassemia. Reduced amounts of detectable beta globin causes beta-plus-thalassemia. The order of the genes in the beta-globin cluster is 5'-epsilon -- gamma-G -- gamma-A -- delta -- beta--3'.
基因ID	3043
基因名	HBB

Swiss	P68871
别名	Hemoglobin subunit beta (YD14429)

产品验证



实验步骤

访问官网浏览详情: www.ablybio.cn