

ADAM15 (YD14607) Rabbit mAb

货号: **AYD15263**

产品信息

反应	Human
宿主	Rabbit
克隆性	Monoclonal
预测反应	
应用	WB IHC-P
推荐浓度	
理论分子量	93kDa
实测分子量	
形式	Liquid
保存条件	Store at -20°C. Avoid freeze / thaw cycles. Buffer: PBS with 0.75% BSA,50% glycerol,pH7.3.
偶联物	Unconjugated
阳性对照	Mouse heart,Mouse kidney,Mouse brain
细胞定位	Endomembrane system, Cell junction, adherens junction, Cell projection, cilium, flagellum, Cytoplasmic vesicle, secretory vesicle, acrosome
纯化	

抗原信息

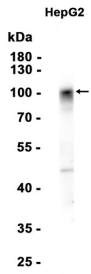
抗原信息	
------	--

靶点信息

研究背景	<p>The protein encoded by this gene is a member of the ADAM (a disintegrin and metalloproteinase) protein family. ADAM family members are type I transmembrane glycoproteins known to be involved in cell adhesion and proteolytic ectodomain processing of cytokines and adhesion molecules. This protein contains multiple functional domains including a zinc-binding metalloprotease domain, a disintegrin-like domain, as well as a EGF-like domain. Through its disintegrin-like domain, this protein specifically interacts with the integrin beta chain, beta 3. It also interacts with Src family protein-tyrosine kinases in a phosphorylation-dependent manner, suggesting that this protein may function in cell-cell adhesion as well as in cellular signaling. Multiple alternatively spliced transcript variants encoding distinct isoforms have been observed.</p>
基因ID	8751

基因名	ADAM15
Swiss	Q13444
别名	ADAM15 (YD14607)

产品验证



实验步骤

访问官网浏览详情: www.ablybio.cn