

EDG2 (YD14653) Rabbit mAb

货号: **AYD15257**

产品信息

反应	Human
宿主	Rabbit
克隆性	Monoclonal
预测反应	
应用	WB IHC-P IP
推荐浓度	
理论分子量	41kDa
实测分子量	
形式	Liquid
保存条件	Store at -20°C. Avoid freeze / thaw cycles. Buffer: PBS with 0.75% BSA,50% glycerol,pH7.3.
偶联物	Unconjugated
阳性对照	HeLa,Jurkat,Mouse lung,Mouse brain,Rat brain
细胞定位	Cell surface, Cell membrane, Endosome
纯化	

抗原信息

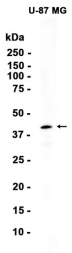
抗原信息	
------	--

靶点信息

研究背景	The integral membrane protein encoded by this gene is a lysophosphatidic acid (LPA) receptor from a group known as EDG receptors. These receptors are members of the G protein-coupled receptor superfamily. Utilized by LPA for cell signaling, EDG receptors mediate diverse biologic functions, including proliferation, platelet aggregation, smooth muscle contraction, inhibition of neuroblastoma cell differentiation, chemotaxis, and tumor cell invasion. Two transcript variants encoding the same protein have been identified for this gene [provided by RefSeq, Jul 2008]
基因ID	1902
基因名	LPAR1

Swiss	Q92633
别名	EDG2 (YD14653)

产品验证



实验步骤

访问官网浏览详情: www.ablybio.cn