

Dopamine Receptor D1 (YD14991) Rabbit mAb

货号: **AYD15171**

产品信息

反应	Human,Mouse,Rat
宿主	Rabbit
克隆性	Monoclonal
预测反应	
应用	WB
推荐浓度	
理论分子量	49kDa
实测分子量	
形式	Liquid
保存条件	Store at -20°C. Avoid freeze / thaw cycles. Buffer: PBS with 0.75% BSA,50% glycerol,pH7.3.
偶联物	Unconjugated
阳性对照	Rat brain
细胞定位	Cell membrane, Endoplasmic reticulum membrane, Cell projection, cilium membrane, dendrite, dendritic spine
纯化	

抗原信息

抗原信息	
------	--

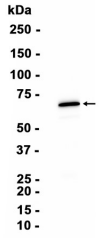
靶点信息

研究背景	This gene encodes the D1 subtype of the dopamine receptor. The D1 subtype is the most abundant dopamine receptor in the central nervous system. This G-protein coupled receptor stimulates adenylyl cyclase and activates cyclic AMP-dependent protein kinases. D1 receptors regulate neuronal growth and development, mediate some behavioral responses, and modulate dopamine receptor D2-mediated events. Alternate transcription initiation sites result in two transcript variants of this gene.
基因ID	1812
基因名	DRD1

Swiss	P21728
别名	Dopamine Receptor D1 (YD14991)

产品验证

Mouse kidney



实验步骤

访问官网浏览详情: www.ablybio.cn