

Nephrin (YD15066) Rabbit mAb

货号: **AYD15156**

产品信息

| | |
|-------|---|
| 反应 | Human,Mouse,Rat |
| 宿主 | Rabbit |
| 克隆性 | Monoclonal |
| 预测反应 | |
| 应用 | WB IHC-P IP |
| 推荐浓度 | |
| 理论分子量 | 135kDa |
| 实测分子量 | |
| 形式 | Liquid |
| 保存条件 | Store at -20°C. Avoid freeze / thaw cycles. Buffer: PBS with 0.75% BSA,50% glycerol,pH7.3. |
| 偶联物 | Unconjugated |
| 阳性对照 | A-549 |
| 细胞定位 | Cell membrane |
| 纯化 | |

抗原信息

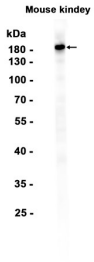
| | |
|------|--|
| 抗原信息 | |
|------|--|

靶点信息

| | |
|------|---|
| 研究背景 | This gene encodes a member of the immunoglobulin family of cell adhesion molecules that functions in the glomerular filtration barrier in the kidney. The gene is primarily expressed in renal tissues, and the protein is a type-1 transmembrane protein found at the slit diaphragm of glomerular podocytes. The slit diaphragm is thought to function as an ultrafilter to exclude albumin and other plasma macromolecules in the formation of urine. Mutations in this gene result in Finnish-type congenital nephrosis 1, characterized by severe proteinuria and loss of the slit diaphragm and foot processes. |
| 基因ID | 4868 |
| 基因名 | NPHS1 |

| | |
|-------|-------------------|
| Swiss | O60500 |
| 别名 | Nephrin (YD15066) |

产品验证



实验步骤

访问官网浏览详情: www.ablybio.cn