

# alpha Lactalbumin (YD15179) Rabbit mAb

货号: **AYD15120**

## 产品信息

|       |   |
|-------|---|
| 反应    | Human   |
| 宿主    | Rabbit  |
| 克隆性   | Monoclonal  |
| 预测反应  |   |
| 应用    | WB  |
| 推荐浓度  |   |
| 理论分子量 | 16kDa   |
| 实测分子量 |   |
| 形式    | Liquid  |
| 保存条件  | Store at -20°C. Avoid freeze / thaw cycles.<br>Buffer: PBS with 0.75% BSA,50% glycerol,pH7.3. |
| 偶联物   | Unconjugated  |
| 阳性对照  | MCF7,Mouse kidney   |
| 细胞定位  | Secreted  |
| 纯化    |   |

## 抗原信息

|      |  |
|------|--|
| 抗原信息 |  |
|------|--|

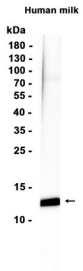
## 靶点信息

|      |  |
|------|--|
| 研究背景 | This gene encodes alpha-lactalbumin, a principal protein of milk. Alpha-lactalbumin forms the regulatory subunit of the lactose synthase (LS) heterodimer and beta 1,4-galactosyltransferase (beta4Gal-T1) forms the catalytic component. Together, these proteins enable LS to produce lactose by transferring galactose moieties to glucose. As a monomer, alpha-lactalbumin strongly binds calcium and zinc ions and may possess bactericidal or antitumor activity. A folding variant of alpha-lactalbumin, called HAMLET, likely induces apoptosis in tumor and immature cells. |
| 基因ID | 3906   |
| 基因名  | LALBA  |

|       |                             |
|-------|-----------------------------|
| Swiss | P00709                      |
| 别名    | alpha Lactalbumin (YD15179) |

## 产品验证

---



## 实验步骤

访问官网浏览详情: [www.ablybio.cn](http://www.ablybio.cn)