

Cathepsin B (YD15368) Rabbit mAb

货号: **AYD15076**

产品信息

反应	Human
宿主	Rabbit
克隆性	Monoclonal
预测反应	
应用	WB IHC-P ICC/IF
推荐浓度	
理论分子量	38kDa
实测分子量	
形式	Liquid
保存条件	Store at -20°C. Avoid freeze / thaw cycles. Buffer: PBS with 0.75% BSA,50% glycerol,pH7.3.
偶联物	Unconjugated
阳性对照	HepG2,A375,HT-1080,Rat kidney,Mouse thymus
细胞定位	Lysosome, Melanosome, Secreted, extracellular space, Apical cell membrane
纯化	

抗原信息

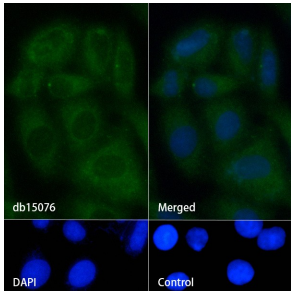
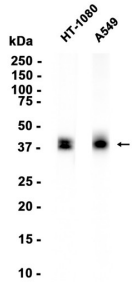
抗原信息	
------	--

靶点信息

研究背景	<p>This gene encodes a member of the C1 family of peptidases. Alternative splicing of this gene results in multiple transcript variants. At least one of these variants encodes a preproprotein that is proteolytically processed to generate multiple protein products. These products include the cathepsin B light and heavy chains, which can dimerize to form the double chain form of the enzyme. This enzyme is a lysosomal cysteine protease with both endopeptidase and exopeptidase activity that may play a role in protein turnover. It is also known as amyloid precursor protein secretase and is involved in the proteolytic processing of a myloid precursor protein (APP). Incomplete proteolytic processing of APP has been suggested to be a causative factor in Alzheimer's disease, the most common cause of dementia. Overexpression of the encoded protein has been associated with esophageal adenocarcinoma and other tumors. Multiple pseudogenes of this gene have been identified.</p>
基因ID	1508

基因名	CTSB
Swiss	P07858
别名	Cathepsin B (YD15368)

产品验证



实验步骤

访问官网浏览详情: www.ablybio.cn