

LAMP1 (YD15502) Rabbit mAb

货号: **AYD15048**

产品信息

反应	Mouse
宿主	Rabbit
克隆性	Monoclonal
预测反应	
应用	WB IHC-P ICC/IF FC IP
推荐浓度	
理论分子量	44kDa
实测分子量	
形式	Liquid
保存条件	Store at -20°C. Avoid freeze / thaw cycles. Buffer: PBS with 0.75% BSA,50% glycerol,pH7.3.
偶联物	Unconjugated
阳性对照	C2C12,NIH/3T3
细胞定位	Lysosome membrane, Endosome membrane, Late endosome membrane, Cell membrane, Cytolytic granule membrane
纯化	

抗原信息

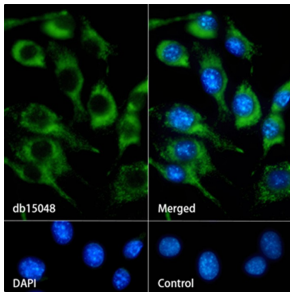
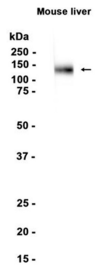
抗原信息	
------	--

靶点信息

研究背景	Enables protein domain specific binding activity. Involved in protein stabilization. Located in several cellular components, including cytoplasmic vesicle; sarcolemma; and vacuole. Is expressed in several structures, including 1-cell stage embryo; central nervous system; craniocervical region bone; extraembryonic component; and gut. Orthologous to human LAMP1 (lysosomal associated membrane protein 1).
基因ID	16783
基因名	Lamp1
Swiss	P11438

别名	LAMP1 (YD15502)
----	-----------------

产品验证



实验步骤

访问官网浏览详情: www.ablybio.cn