

ATP5A (YD15504) Rabbit mAb

货号: **AYD15047**

产品信息

反应	Human,Mouse,Rat
宿主	Rabbit
克隆性	Monoclonal
预测反应	
应用	WB IHC-P ICC/IF FC
推荐浓度	
理论分子量	60kDa
实测分子量	
形式	Liquid
保存条件	Store at -20°C. Avoid freeze / thaw cycles. Buffer: PBS with 0.75% BSA,50% glycerol,pH7.3.
偶联物	Unconjugated
阳性对照	BT474,SKOV3,HeLa,MCF-7,Mouse kidney,Mouse heart,Rat kidney,Rat heart
细胞定位	Mitochondrion, Mitochondrion inner membrane, Cell membrane
纯化	

抗原信息

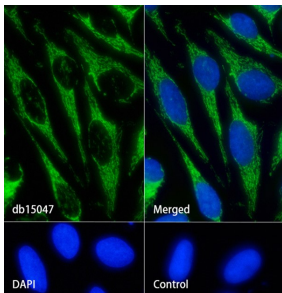
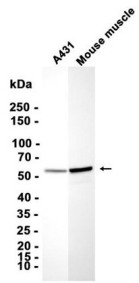
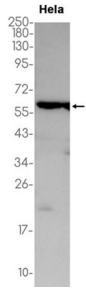
抗原信息	
------	--

靶点信息

研究背景	<p>This gene encodes a subunit of mitochondrial ATP synthase. Mitochondrial ATP synthase catalyzes ATP synthesis, using an electrochemical gradient of protons across the inner membrane during oxidative phosphorylation. ATP synthase is composed of two linked multi-subunit complexes: the soluble catalytic core, F₁, and the membrane-spanning component, F_o, comprising the proton channel. The catalytic portion of mitochondrial ATP synthase consists of 5 different subunits (alpha, beta, gamma, delta, and epsilon) assembled with a stoichiometry of 3 alpha, 3 beta, and a single representative of the other 3. The proton channel consists of three main subunits (a, b, c). This gene encodes the alpha subunit of the catalytic core. Alternatively spliced transcript variants encoding the different isoforms have been identified. Pseudogenes of this gene are located on chromosomes 9, 2, and 16.</p>
基因ID	498

基因名	ATP5F1A
Swiss	P25705
别名	ATP5A (YD15504)

产品验证



实验步骤

访问官网浏览详情: www.ablybio.cn