

UBE2M (YD15608) Rabbit mAb

货号: **AYD15028**

产品信息

反应	Human,Mouse,Rat
宿主	Rabbit
克隆性	Monoclonal
预测反应	
应用	WB IHC-P ICC/IF FC
推荐浓度	
理论分子量	21kDa
实测分子量	
形式	Liquid
保存条件	Store at -20°C. Avoid freeze / thaw cycles. Buffer: PBS with 0.75% BSA,50% glycerol,pH7.3.
偶联物	Unconjugated
阳性对照	
细胞定位	
纯化	

抗原信息

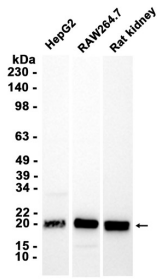
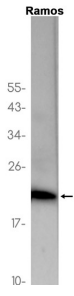
抗原信息	
------	--

靶点信息

研究背景	Accepts the ubiquitin-like protein NEDD8 from the UBA3-NAE1 E1 complex and catalyzes its covalent attachment to other proteins. The specific interaction with the E3 ubiquitin ligase RBX1, but not RBX2, suggests that the RBX1-UBE2M complex neddylates specific target proteins, such as CUL1, CUL2, CUL3 and CUL4. Involved in cell proliferation
基因ID	9040
基因名	UBE2M
Swiss	P61081

别名	UBE2M (YD15608)
----	-----------------

产品验证



实验步骤

访问官网浏览详情: www.ablybio.cn