

CLEC2B (YD15989) Rabbit mAb

货号: **AYD14949**

产品信息

反应	Human
宿主	Rabbit
克隆性	Monoclonal
预测反应	
应用	WB IHC-P ICC/IF IP
推荐浓度	
理论分子量	17kDa
实测分子量	
形式	Liquid
保存条件	Store at -20°C. Avoid freeze / thaw cycles. Buffer: PBS with 0.75% BSA,50% glycerol,pH7.3.
偶联物	Unconjugated
阳性对照	Rat spleen
细胞定位	Cell membrane, Golgi apparatus membrane
纯化	

抗原信息

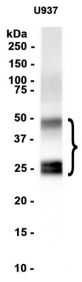
抗原信息	
------	--

靶点信息

研究背景	This gene encodes a member of the C-type lectin/C-type lectin-like domain (CTL/CTLD) superfamily. Members of this family share a common protein fold and have diverse functions, such as cell adhesion, cell-cell signalling, glycoprotein turnover, and roles in inflammation and immune response. The encoded type 2 transmembrane protein may function as a cell activation antigen. An alternative splice variant has been described but its full-length sequence has not been determined. This gene is closely linked to other CTL/CTLD superfamily members on chromosome 12p13 in the natural killer gene complex region.
基因ID	9976
基因名	CLEC2B

Swiss	Q92478
别名	CLEC2B (YD15989)

产品验证



实验步骤

访问官网浏览详情: www.ablybio.cn