

Aquaporin 2 (YD16662) Rabbit mAb

货号: **AYD14899**

产品信息

反应	Human,Mouse,Rat
宿主	Rabbit
克隆性	Monoclonal
预测反应	
应用	WB IHC-P IP
推荐浓度	
理论分子量	29kDa
实测分子量	
形式	Liquid
保存条件	Store at -20°C. Avoid freeze / thaw cycles. Buffer: PBS with 0.75% BSA,50% glycerol,pH7.3.
偶联物	Unconjugated
阳性对照	293T
细胞定位	Apical cell membrane, Basolateral cell membrane, Cell membrane, Cytoplasmic vesicle membrane, Golgi apparatus, trans-Golgi network membrane
纯化	

抗原信息

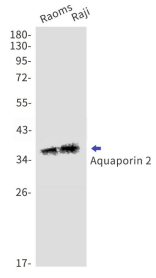
抗原信息	
------	--

靶点信息

研究背景	This gene encodes a water channel protein located in the kidney collecting tubule. It belongs to the MIP/a quaporin family, some members of which are clustered together on chromosome 12q13. Mutations in this gene have been linked to autosomal dominant and recessive forms of nephrogenic diabetes insipidus.
基因ID	359
基因名	AQP2
Swiss	?P41181

别名	Aquaporin 2 (YD16662)
----	-----------------------

产品验证



实验步骤

访问官网浏览详情: www.ablybio.cn