

TPX2 (YD34038) Rabbit mAb

货号: **AYD14876**

产品信息

反应	Human
宿主	Rabbit
克隆性	Monoclonal
预测反应	
应用	WB IHC-P ICC/IF FC IP
推荐浓度	
理论分子量	86kDa
实测分子量	
形式	Liquid
保存条件	Store at -20°C. Avoid freeze / thaw cycles. Buffer: PBS with 0.75% BSA,50% glycerol,pH7.3.
偶联物	Unconjugated
阳性对照	A-549
细胞定位	Nucleus, Cytoplasm, cytoskeleton, spindle, spindle pole
纯化	

抗原信息

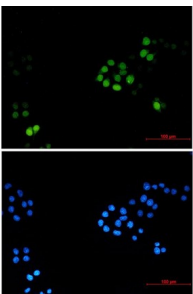
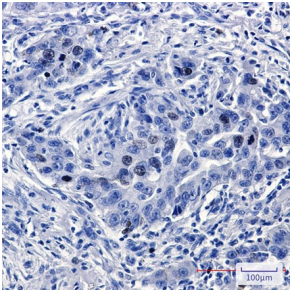
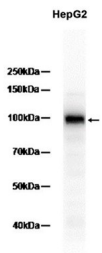
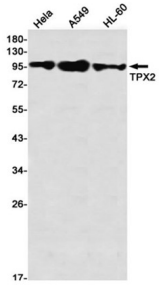
抗原信息	
------	--

靶点信息

研究背景	Spindle assembly factor required for normal assembly of mitotic spindles. Required for normal assembly of microtubules during apoptosis. Required for chromatin and/or kinetochore dependent microtubule nucleation. Mediates AURKA localization to spindle microtubules. Activates AURKA by promoting its autophosphorylation at 'Thr-288' and protects this residue against dephosphorylation. TPX2 is inactivated upon binding to importin-alpha. At the onset of mitosis, GOLGA2 interacts with importin-alpha, liberating TPX2 from importin-alpha, allowing TPX2 to activate AURKA kinase and stimulate local microtubule nucleation.
基因ID	22974
基因名	TPX2

Swiss	Q9ULW0
别名	TPX2 (YD34038)

产品验证



实验步骤

访问官网浏览详情: www.ablybio.cn