

Tin2 (YD16417) Rabbit mAb

货号: **AYD14858**

产品信息

反应	Human,Mouse,Rat
宿主	Rabbit
克隆性	Monoclonal
预测反应	
应用	WB
推荐浓度	
理论分子量	50kDa
实测分子量	
形式	Liquid
保存条件	Store at -20°C. Avoid freeze / thaw cycles. Buffer: PBS with 0.75% BSA,50% glycerol,pH7.3.
偶联物	Unconjugated
阳性对照	MCF7,HepG2,Mouse skeletal muscle,Mouse heart
细胞定位	Nucleus, Chromosome, telomere, Nucleus matrix
纯化	

抗原信息

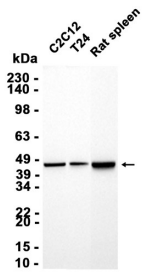
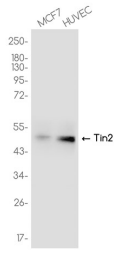
抗原信息	
------	--

靶点信息

研究背景	This gene encodes one of the proteins of the shelterin, or telosome, complex which protects telomeres by allowing the cell to distinguish between telomeres and regions of DNA damage. The protein encoded by this gene is a critical part of shelterin; it interacts with the three DNA-binding proteins of the shelterin complex, and it is important for assembly of the complex. Mutations in this gene cause dyskeratosis congenita (DKC), an inherited bone marrow failure syndrome.
基因ID	26277
基因名	TINF2
Swiss	Q9BSI4

别名	Tin2 (YD16417)
----	----------------

产品验证



实验步骤

访问官网浏览详情: www.ablybio.cn