

Myosin Light Chain 2 (YD12003) Rabbit mAb

货号: **AYD14820**

产品信息

反应	Human,Mouse,Rat
宿主	Rabbit
克隆性	Monoclonal
预测反应	
应用	WB IHC-P
推荐浓度	
理论分子量	19kDa
实测分子量	
形式	Liquid
保存条件	Store at -20°C. Avoid freeze / thaw cycles. Buffer: PBS with 0.75% BSA,50% glycerol,pH7.3.
偶联物	Unconjugated
阳性对照	MCF7,Mouse skeletal muscle
细胞定位	Cytoplasm, myofibril, sarcomere, A band
纯化	

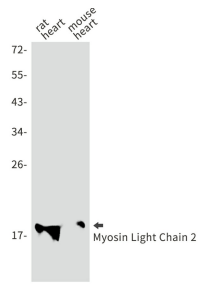
抗原信息

抗原信息	
------	--

靶点信息

研究背景	Thus gene encodes the regulatory light chain associated with cardiac myosin beta (or slow) heavy chain. Ca ⁺ triggers the phosphorylation of regulatory light chain that in turn triggers contraction. Mutations in t his gene are associated with mid-left ventricular chamber type hypertrophic cardiomyopathy.
基因ID	4633
基因名	MYL2
Swiss	P10916
别名	Myosin Light Chain 2 (YD12003)

产品验证



实验步骤

访问官网浏览详情: www.ablybio.cn