

BACE1 (YD16768) Rabbit mAb

货号: **AYD14803**

产品信息

反应	Human,Mouse,Rat
宿主	Rabbit
克隆性	Monoclonal
预测反应	
应用	WB IP
推荐浓度	
理论分子量	56kDa
实测分子量	
形式	Liquid
保存条件	Store at -20°C. Avoid freeze / thaw cycles. Buffer: PBS with 0.75% BSA,50% glycerol,pH7.3.
偶联物	Unconjugated
阳性对照	SH-SY5Y
细胞定位	Cell membrane, Golgi apparatus, trans-Golgi network, Endoplasmic reticulum, Endosome, Cell surface, Cytoplasmic vesicle membrane, Membrane raft, Lysosome, Late endosome, Early endosome, Recycling endosome, Cell projection, axon, dendrite
纯化	

抗原信息

抗原信息	
------	--

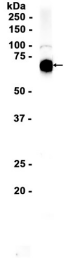
靶点信息

研究背景	This gene encodes a member of the peptidase A1 family of aspartic proteases. Alternative splicing results in multiple transcript variants, at least one of which encodes a preproprotein that is proteolytically processed to generate the mature protease. This transmembrane protease catalyzes the first step in the formation of amyloid beta peptide from amyloid precursor protein. Amyloid beta peptides are the main constituent of amyloid beta plaques, which accumulate in the brains of human Alzheimer's disease patients.
基因ID	23621
基因名	BACE1

Swiss	P56817
别名	BACE1 (YD16768)

产品验证

Mouse brain



实验步骤

访问官网浏览详情: www.ablybio.cn