

Nesprin3 (YD14818) Rabbit mAb

货号: **AYD14792**

产品信息

反应	Human
宿主	Rabbit
克隆性	Monoclonal
预测反应	
应用	WB
推荐浓度	
理论分子量	112kDa
实测分子量	
形式	Liquid
保存条件	Store at -20°C. Avoid freeze / thaw cycles. Buffer: PBS with 0.75% BSA,50% glycerol,pH7.3.
偶联物	Unconjugated
阳性对照	Jurkat,K-562,LO2,HepG2
细胞定位	Nucleus outer membrane, Nucleus envelope, Rough endoplasmic reticulum
纯化	

抗原信息

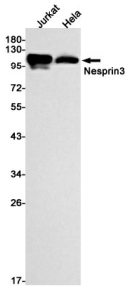
抗原信息	
------	--

靶点信息

研究背景	As a component of the LINC (Linker of Nucleoskeleton and Cytoskeleton complex involved in the connection between the nuclear lamina and the cytoskeleton. The nucleocytoplasmic interactions established by the LINC complex play an important role in the transmission of mechanical forces across the nuclear envelope and in nuclear movement and positioning. Probable anchoring protein which tethers the nucleus to the cytoskeleton by binding PLEC which can associate with the intermediate filament system. Plays a role in the regulation of aortic epithelial cell morphology, and is required for flow-induced centrosome polarization and directional migration in aortic endothelial cells.
基因ID	161176
基因名	SYNE3

Swiss	Q6ZMZ3
别名	Nesprin3 (YD14818)

产品验证



实验步骤

访问官网浏览详情: www.ablybio.cn