

# Phospho-Cdc6 (Ser106) (YD12822) Rabbit mAb

货号: **AYD14791**

## 产品信息

反应	Human
宿主	Rabbit
克隆性	Monoclonal
预测反应	
应用	WB
推荐浓度	
理论分子量	63kDa
实测分子量	
形式	Liquid
保存条件	Store at -20°C. Avoid freeze / thaw cycles. Buffer: PBS with 0.75% BSA,50% glycerol,pH7.3.
偶联物	Unconjugated
阳性对照	HeLa
细胞定位	Nucleus, Cytoplasm
纯化	

## 抗原信息

抗原信息	
------	--

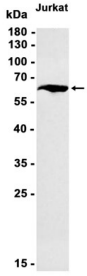
## 靶点信息

研究背景	The protein encoded by this gene is highly similar to <i>Saccharomyces cerevisiae</i> Cdc6, a protein essential for the initiation of DNA replication. This protein functions as a regulator at the early steps of DNA replication. It localizes in cell nucleus during cell cycle G1, but translocates to the cytoplasm at the start of S phase. The subcellular translocation of this protein during cell cycle is regulated through its phosphorylation by Cdks. Transcription of this protein was reported to be regulated in response to mitogenic signals through transcriptional control mechanism involving E2F proteins.
基因ID	990
基因名	CDC6

Swiss	Q99741
别名	Phospho-Cdc6 (Ser106) (YD12822)

## 产品验证

---



## 实验步骤

访问官网浏览详情: [www.ablybio.cn](http://www.ablybio.cn)