

Dystrobrevin alpha (YD16828) Rabbit mAb

货号: **AYD14788**

产品信息

反应	Human,Mouse,Rat
宿主	Rabbit
克隆性	Monoclonal
预测反应	
应用	WB IHC-P ICC/IF FC
推荐浓度	
理论分子量	84kDa
实测分子量	
形式	Liquid
保存条件	Store at -20°C. Avoid freeze / thaw cycles. Buffer: PBS with 0.75% BSA,50% glycerol,pH7.3.
偶联物	Unconjugated
阳性对照	U-87MG,Mouse brain
细胞定位	Cytoplasm, Synapse, Cell membrane
纯化	

抗原信息

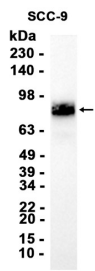
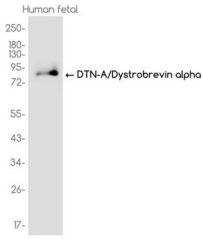
抗原信息	
------	--

靶点信息

研究背景	The protein encoded by this gene belongs to the dystrobrevin subfamily of the dystrophin family. This protein is a component of the dystrophin-associated protein complex (DPC), which consists of dystrophin and several integral and peripheral membrane proteins, including dystroglycans, sarcoglycans, syntrophins and alpha- and beta-dystrobrevin. The DPC localizes to the sarcolemma and its disruption is associated with various forms of muscular dystrophy. Mutations in this gene are associated with left ventricular noncompaction with congenital heart defects. Multiple alternatively spliced transcript variants encoding different isoforms have been identified for this gene.
基因ID	1837
基因名	DTNA

Swiss	Q9Y4J8
别名	Dystrobrevin alpha (YD16828)

产品验证



实验步骤

访问官网浏览详情: www.ablybio.cn