

CRMP2 (YD16864) Rabbit mAb

货号: **AYD14770**

产品信息

反应	Human,Mouse,Rat
宿主	Rabbit
克隆性	Monoclonal
预测反应	
应用	WB IHC-P ICC/IF FC IP
推荐浓度	
理论分子量	62kDa
实测分子量	
形式	Liquid
保存条件	Store at -20°C. Avoid freeze / thaw cycles. Buffer: PBS with 0.75% BSA,50% glycerol,pH7.3.
偶联物	Unconjugated
阳性对照	HepG2,U-251MG,293T
细胞定位	Cytoplasm, cytosol, cytoskeleton, Membrane
纯化	

抗原信息

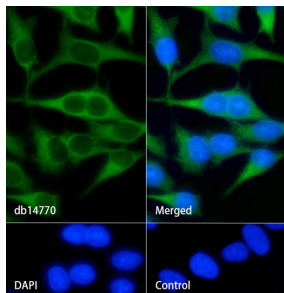
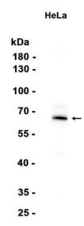
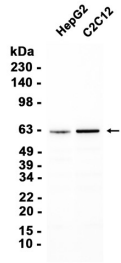
抗原信息	
------	--

靶点信息

研究背景	This gene encodes a member of the collapsin response mediator protein family. Collapsin response mediator proteins form homo- and hetero-tetramers and facilitate neuron guidance, growth and polarity. The encoded protein promotes microtubule assembly and is required for Sema3A-mediated growth cone collapse, and also plays a role in synaptic signaling through interactions with calcium channels. This gene has been implicated in multiple neurological disorders, and hyperphosphorylation of the encoded protein may play a key role in the development of Alzheimer's disease. Alternatively spliced transcript variants encoding multiple isoforms have been observed for this gene.
基因ID	1808
基因名	DPYSL2

Swiss	Q16555
别名	CRMP2 (YD16864)

产品验证



实验步骤

访问官网浏览详情: www.ablybio.cn