

# AP2S1 (YD16957) Rabbit mAb

货号: **AYD14763**

## 产品信息

反应	Human,Mouse,Rat
宿主	Rabbit
克隆性	Monoclonal
预测反应	
应用	WB IHC-P IP
推荐浓度	
理论分子量	17kDa
实测分子量	
形式	Liquid
保存条件	Store at -20°C. Avoid freeze / thaw cycles. Buffer: PBS with 0.75% BSA,50% glycerol,pH7.3.
偶联物	Unconjugated
阳性对照	HeLa,LO2,SH-SY5Y,Mouse brain,Mouse kidney,Mouse spleen,Rat brain,Rat spleen
细胞定位	Cell membrane, Membrane, coated pit
纯化	

## 抗原信息

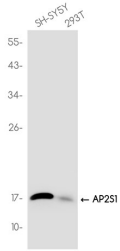
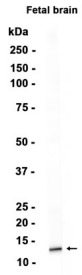
抗原信息	
------	--

## 靶点信息

研究背景	One of two major clathrin-associated adaptor complexes, AP-2, is a heterotetramer which is associated with the plasma membrane. This complex is composed of two large chains, a medium chain, and a small chain. This gene encodes the small chain of this complex. Alternative splicing results in multiple transcript variants.
基因ID	1175
基因名	AP2S1
Swiss	P53680

别名	AP2S1 (YD16957)
----	-----------------

## 产品验证



## 实验步骤

访问官网浏览详情: [www.ablybio.cn](http://www.ablybio.cn)