

# Lysophospholipase 1 (YD18205) Rabbit mAb

货号: **AYD14724**

## 产品信息

反应	Human,Mouse,Rat
宿主	Rabbit
克隆性	Monoclonal
预测反应	
应用	WB
推荐浓度	
理论分子量	25kDa
实测分子量	
形式	Liquid
保存条件	Store at -20°C. Avoid freeze / thaw cycles. Buffer: PBS with 0.75% BSA,50% glycerol,pH7.3.
偶联物	Unconjugated
阳性对照	LO2,Mouse heart,Mouse kidney
细胞定位	Cytoplasm, Cell membrane, Nucleus membrane, Endoplasmic reticulum
纯化	

## 抗原信息

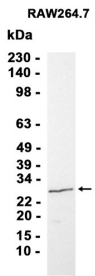
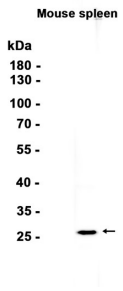
抗原信息	
------	--

## 靶点信息

研究背景	This gene encodes a member of the alpha/beta hydrolase superfamily. The encoded protein functions as a homodimer, exhibiting both depalmitoylating as well as lysophospholipase activity, and may be involved in Ras localization and signaling. Alternate splicing results in multiple transcript variants. Pseudogenes of this gene have been defined on chromosomes 4, 6, and 7.
基因ID	10434
基因名	LYPLA1
Swiss	O75608

别名	Lysophospholipase 1 (YD18205)
----	-------------------------------

## 产品验证



## 实验步骤

访问官网浏览详情: [www.ablybio.cn](http://www.ablybio.cn)