

KLKB1 (YD18225) Rabbit mAb

货号: **AYD14721**

产品信息

反应	Human
宿主	Rabbit
克隆性	Monoclonal
预测反应	
应用	WB IHC-P
推荐浓度	
理论分子量	71kDa
实测分子量	
形式	Liquid
保存条件	Store at -20°C. Avoid freeze / thaw cycles. Buffer: PBS with 0.75% BSA,50% glycerol,pH7.3.
偶联物	Unconjugated
阳性对照	Mouse plasma
细胞定位	Secreted
纯化	

抗原信息

抗原信息	
------	--

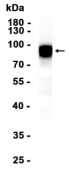
靶点信息

研究背景	This gene encodes a glycoprotein that participates in the surface-dependent activation of blood coagulation, fibrinolysis, kinin generation and inflammation. The encoded preproprotein present in plasma as a non-covalent complex with high molecular weight kininogen undergoes proteolytic processing mediated by activated coagulation factor XII to generate a disulfide-linked, heterodimeric serine protease comprised of heavy and light chains. Certain mutations in this gene cause prekallikrein deficiency. Alternative splicing results in multiple transcript variants encoding different isoforms.
基因ID	3818
基因名	KLKB1

Swiss	P03952
别名	KLKB1 (YD18225)

产品验证

Human plasma



实验步骤

访问官网浏览详情: www.ablybio.cn