

# Prolactin Receptor (YD18619) Rabbit mAb

货号: **AYD14664**

## 产品信息

反应	Human,Mouse,Rat
宿主	Rabbit
克隆性	Monoclonal
预测反应	
应用	WB IHC-P ICC/IF
推荐浓度	
理论分子量	70kDa
实测分子量	
形式	Liquid
保存条件	Store at -20°C. Avoid freeze / thaw cycles. Buffer: PBS with 0.75% BSA,50% glycerol,pH7.3.
偶联物	Unconjugated
阳性对照	HepG2,BT-474,MCF7
细胞定位	Membrane, Secreted
纯化	

## 抗原信息

抗原信息	
------	--

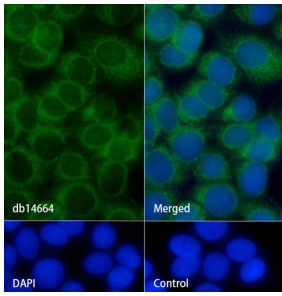
## 靶点信息

研究背景	This gene encodes a receptor for the anterior pituitary hormone, prolactin, and belongs to the type I cyto kinase receptor family. Prolactin-dependent signaling occurs as the result of ligand-induced dimerization of the prolactin receptor. Several alternatively spliced transcript variants encoding different membrane-bound and soluble isoforms have been described for this gene, which may function to modulate the endocrine and autocrine effects of prolactin in normal tissue and cancer. [provided by RefSeq, Feb 2011]
基因ID	5618
基因名	PRLR
Swiss	P16471

别名	Prolactin Receptor (YD18619)
----	------------------------------

## 产品验证

---



## 实验步骤

访问官网浏览详情: [www.ablybio.cn](http://www.ablybio.cn)