

GTPase HRAS (YD18859) Rabbit mAb

货号: **AYD14627**

产品信息

反应	Human,Mouse,Rat
宿主	Rabbit
克隆性	Monoclonal
预测反应	
应用	WB IP
推荐浓度	
理论分子量	21kDa
实测分子量	
形式	Liquid
保存条件	Store at -20°C. Avoid freeze / thaw cycles. Buffer: PBS with 0.75% BSA,50% glycerol,pH7.3.
偶联物	Unconjugated
阳性对照	SKOV3,Mouse brain,Mouse skeletal muscle,Mouse kidney,Rat brain
细胞定位	Cell membrane, Golgi apparatus, Golgi apparatus membrane, Nucleus, Cytoplasm, perinuclear region
纯化	

抗原信息

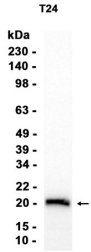
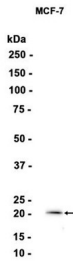
抗原信息	
------	--

靶点信息

研究背景	<p>This gene belongs to the Ras oncogene family, whose members are related to the transforming genes of mammalian sarcoma retroviruses. The products encoded by these genes function in signal transduction pathways. These proteins can bind GTP and GDP, and they have intrinsic GTPase activity. This protein undergoes a continuous cycle of de- and re-palmitoylation, which regulates its rapid exchange between the plasma membrane and the Golgi apparatus. Mutations in this gene cause Costello syndrome, a disease characterized by increased growth at the prenatal stage, growth deficiency at the postnatal stage, predisposition to tumor formation, mental retardation, skin and musculoskeletal abnormalities, distinctive facial appearance and cardiovascular abnormalities. Defects in this gene are implicated in a variety of cancers, including bladder cancer, follicular thyroid cancer, and oral squamous cell carcinoma. Multiple transcript variants, which encode different isoforms, have been identified for this gene.</p>
基因ID	3265

基因名	HRAS
Swiss	P01112
别名	GTPase HRAS (YD18859)

产品验证



实验步骤

访问官网浏览详情: www.ablybio.cn