

Alpha-synuclein (YD14457) Rabbit mAb

货号: **AYD14600**

产品信息

反应	Human,Mouse,Rat
宿主	Rabbit
克隆性	Monoclonal
预测反应	
应用	WB IHC-P IP
推荐浓度	
理论分子量	14kDa
实测分子量	
形式	Liquid
保存条件	Store at -20°C. Avoid freeze / thaw cycles. Buffer: PBS with 0.75% BSA,50% glycerol,pH7.3.
偶联物	Unconjugated
阳性对照	293T,Mouse brain,Rat brain
细胞定位	Cytoplasm, Membrane, Nucleus, Synapse, Secreted, Cell projection, axon
纯化	

抗原信息

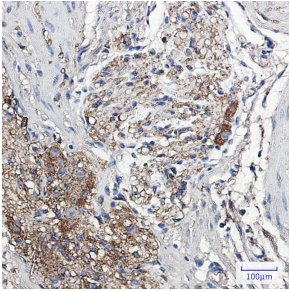
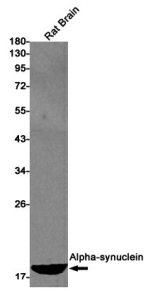
抗原信息	
------	--

靶点信息

研究背景	Alpha-synuclein is a member of the synuclein family, which also includes beta- and gamma-synuclein. Synucleins are abundantly expressed in the brain and alpha- and beta-synuclein inhibit phospholipase D2 selectively. SNCA may serve to integrate presynaptic signaling and membrane trafficking. Defects in SNCA have been implicated in the pathogenesis of Parkinson disease. SNCA peptides are a major component of amyloid plaques in the brains of patients with Alzheimer's disease. Alternatively spliced transcripts encoding different isoforms have been identified for this gene.
基因ID	6622
基因名	SNCA

Swiss	P37840
别名	Alpha-synuclein (YD14457)

产品验证



实验步骤

访问官网浏览详情: www.ablybio.cn