

EHD1 (YD13446) Rabbit mAb

货号: **AYD14583**

产品信息

反应	Human,Mouse,Rat
宿主	Rabbit
克隆性	Monoclonal
预测反应	
应用	WB ICC/IF FC
推荐浓度	
理论分子量	61kDa
实测分子量	
形式	Liquid
保存条件	Store at -20°C. Avoid freeze / thaw cycles. Buffer: PBS with 0.75% BSA,50% glycerol,pH7.3.
偶联物	Unconjugated
阳性对照	HeLa,THP-1,U-251MG,Mouse liver,Mouse brain,Mouse spleen,Rat lung,Rat testis,Rat kidney
细胞定位	Recycling endosome membrane, Early endosome membrane, Cell membrane, Cell projection, cilium membrane
纯化	

抗原信息

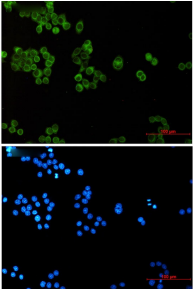
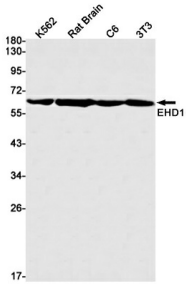
抗原信息	
------	--

靶点信息

研究背景	This gene belongs to a highly conserved gene family encoding EPS15 homology (EH) domain-containing proteins. The protein-binding EH domain was first noted in EPS15, a substrate for the epidermal growth factor receptor. The EH domain has been shown to be an important motif in proteins involved in protein-protein interactions and in intracellular sorting. The protein encoded by this gene is thought to play a role in the endocytosis of IGF1 receptors. Alternatively spliced transcript variants have been found for this gene. [provided by RefSeq, Sep 2013]
基因ID	10938
基因名	EHD1

Swiss	Q9H4M9
别名	EHD1 (YD13446)

产品验证



实验步骤

访问官网浏览详情: www.ablybio.cn