

# SEC22B (YD19312) Rabbit mAb

货号: **AYD14528**

## 产品信息

反应	Human,Mouse,Rat
宿主	Rabbit
克隆性	Monoclonal
预测反应	
应用	WB ICC/IF FC IP
推荐浓度	
理论分子量	25kDa
实测分子量	
形式	Liquid
保存条件	Store at -20°C. Avoid freeze / thaw cycles. Buffer: PBS with 0.75% BSA,50% glycerol,pH7.3.
偶联物	Unconjugated
阳性对照	A-431,LO2,HeLa,Mouse thymus,Mouse brain
细胞定位	Endoplasmic reticulum membrane, Endoplasmic reticulum-Golgi intermediate compartment membrane, Golgi apparatus, cis-Golgi network membrane, trans-Golgi network membrane, Melanosome
纯化	

## 抗原信息

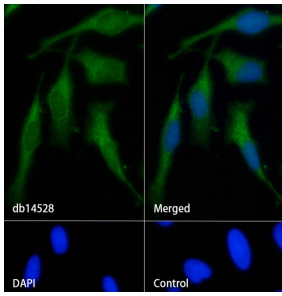
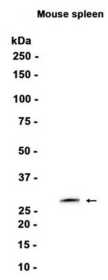
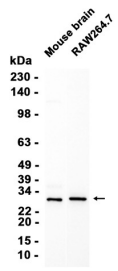
抗原信息	
------	--

## 靶点信息

研究背景	The protein encoded by this gene is a member of the SEC22 family of vesicle trafficking proteins. It seems to complex with SNARE and it is thought to play a role in the ER-Golgi protein trafficking. This protein has strong similarity to Mus musculus and Cricetulus griseus proteins.
基因ID	9554
基因名	SEC22B
Swiss	O75396

别名	SEC22B (YD19312)
----	------------------

### 产品验证



### 实验步骤

访问官网浏览详情: [www.ablybio.cn](http://www.ablybio.cn)