

HP1 gamma (YD14241) Rabbit mAb

货号: **AYD14508**

产品信息

反应	Human,Mouse,Rat
宿主	Rabbit
克隆性	Monoclonal
预测反应	
应用	WB IHC-P ICC/IF FC IP
推荐浓度	
理论分子量	21kDa
实测分子量	
形式	Liquid
保存条件	Store at -20°C. Avoid freeze / thaw cycles. Buffer: PBS with 0.75% BSA,50% glycerol,pH7.3.
偶联物	Unconjugated
阳性对照	
细胞定位	Nucleus
纯化	

抗原信息

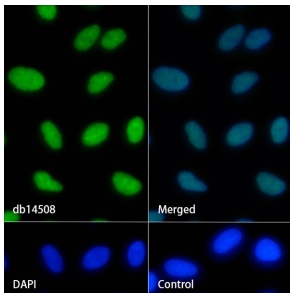
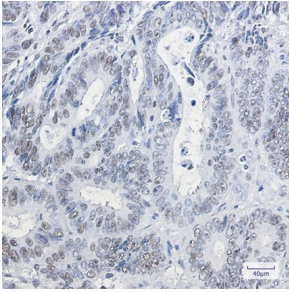
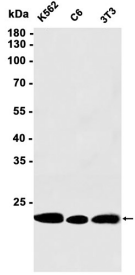
抗原信息	
------	--

靶点信息

研究背景	Component of heterochromatin, which recognizes and binds histone H3 tails methylated at 'Lys-9', leading to epigenetic repression (By similarity). Also recognizes and binds histone H1.4 methylated at 'Lys-26' (H1.4K26me) (By similarity). Involved in the formation of functional kinetochore through interaction with MIS12 complex proteins (By similarity). Involved in the formation of functional kinetochore through interaction with MIS12 complex proteins (By similarity). Contributes to the conversion of local chromatin to a heterochromatin-like repressive state through H3 'Lys-9' trimethylation, mediates the recruitment of the methyltransferases SUV39H1 and/or SUV39H2 by the PER complex to the E-box elements of the circadian target genes such as PER2 itself or PER1 (PubMed:24413057). Mediates the recruitment of NIPBL to sites of DNA damage at double-strand breaks (DSBs) (By similarity)
基因ID	3134

基因名	Cbx3
Swiss	P23198
别名	HP1 gamma (YD14241)

产品验证



实验步骤

访问官网浏览详情: www.ablybio.cn