

LOXL2 (YD21015) Rabbit mAb

货号: **AYD14461**

产品信息

反应	Human,Mouse,Rat
宿主	Rabbit
克隆性	Monoclonal
预测反应	
应用	WB
推荐浓度	
理论分子量	87kDa
实测分子量	
形式	Liquid
保存条件	Store at -20°C. Avoid freeze / thaw cycles. Buffer: PBS with 0.75% BSA,50% glycerol,pH7.3.
偶联物	Unconjugated
阳性对照	A-549,Mouse heart,Rat kidney
细胞定位	Secreted, extracellular space, extracellular matrix, basement membrane, Nucleus, Chromosome, Endoplasmic reticulum
纯化	

抗原信息

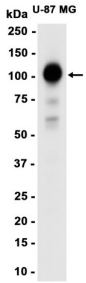
抗原信息	
------	--

靶点信息

研究背景	This gene encodes a member of the lysyl oxidase gene family. The prototypic member of the family is essential to the biogenesis of connective tissue, encoding an extracellular copper-dependent amine oxidase that catalyses the first step in the formation of crosslinks in collagens and elastin. A highly conserved amino acid sequence at the C-terminus end appears to be sufficient for amine oxidase activity, suggesting that at each family member may retain this function. The N-terminus is poorly conserved and may impart additional roles in developmental regulation, senescence, tumor suppression, cell growth control, and chemotaxis to each member of the family.
基因ID	4017

基因名	LOXL2
Swiss	Q9Y4K0
别名	LOXL2 (YD21015)

产品验证



实验步骤

访问官网浏览详情: www.ablybio.cn